

# ***WIRELESS RECEIVER* DVR**

## **Instruction Manual**



Before operating the unit, please read this manual thoroughly, and retain it for future reference.

# CATALOGUE

<b>NOTICE PROCEEDING</b>	2
<b>INTRODUCTION GUIDE</b>	3
1. Assembly	3
2. Product sketch map	3
3. Fix battery	4
4. Insert&take out MicroSD card	4
5. Charge battery	4
6. Turn on/off the product	5
7. Set clock	5
<b>OPERATION GUIDE</b>	7
1. Function set menu	7
■ Video Set	7
Size	7
Tuning	7
Loop Record	7
Time Stamp	7
Motion Detect	7
■ Setup	7
Format	7
Vibra	7
Language	8
Auto Off	8
Sys. Reset	8
TV output	8
Date Input	8
USB	8
2. Volume Adjustment	8
3. Wireless receiving mode	8
4. AV IN Mode	9
5. Recording Video	9
6. Remote controlling operation	10
7. Video playback	10
■ Playback	10
■ Playback set menu	10
Delete	10
Copy To Card	10
Slide Show	10
Protect	11
Thumbnail	11
8. Vibra & indicator light	11
<b>OTHER FUNCTIONS</b>	13
1. Connect PC	13
2. Connect TV	13
<b>SOLUTION FOR COMMON PROBLEMS</b>	13
<b>SPECIFICATION</b>	14

## NOTICE PROCEEDING

### Alarm:

- In order to reduce fire, electric shock and product damage, please avoid this product in Rain, in humidity and in water drop.
- Please only use our commendatory accessories.
- Please not take down this product, there is no built-in assembly that users can repair.

### Battery:

If the battery is used improperly, the fire and explosion will happen. Please comply following notice proceedings:

- Please not take down this battery.
- Please not make the battery in short circuit and please not make the metal objects contact the battery end.
- Please not use the damaged and liquid-leaked battery.
- Please not discard the battery in fire.
- Please not put the battery in the place with more than 60℃.
- Please not knock and fall off the battery.
- Please put the battery in the place which the children can't touch.
- If the battery is placed incorrectly, the explosion will happen.
- If the using time of the battery becomes short obviously, please change the battery.
- When you change the battery, you can only use the same battery or the same type battery advised by the manufactory.
- Please not discard old battery randomly.

### Notice:

- The electromagnetic field of the special frequency probably affect the Video and audio of this product.
- If the static and electromagnetism lead the failure of the data transfer, please cut the connection or restart the application and reconnect and communication cable (USB etc.).
- Please not put this product in the airtight places of bookcase and closet and so on to avoid the danger of electric shock and fire from the exceeded temperature.
- Please not put the product near the fire.
- During the electrification, please keep good aeration condition for this product.

## INTRODUCTION GUIDE

### 1.Assembly

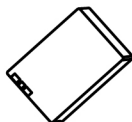
① DVR mainframe



② Camera



③ Battery



④ USB cable



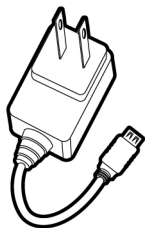
⑤ AV Cable



⑥ Remote controller



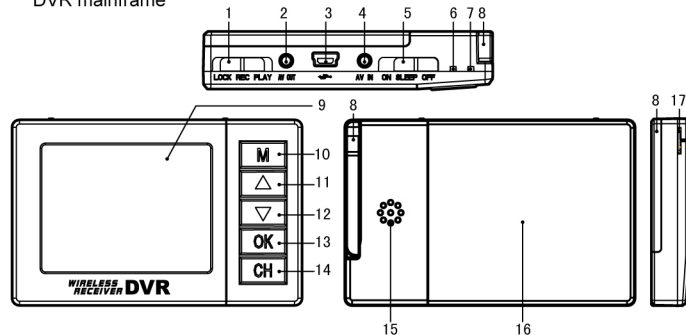
⑦ Power adapter



## INTRODUCTION GUIDE

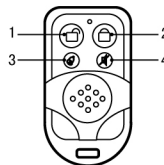
### 2.Product sketch map

DVR mainframe



- |                      |                           |                           |               |
|----------------------|---------------------------|---------------------------|---------------|
| 1. Recording switch  | 2. AV Out jack            | 3. USB Jack               | 4. AV In jack |
| 5. Power switch      | 6. Status Indicator light | 7. Charge Indicator light |               |
| 8. Receiving Antenna | 9. LCD Screen             | 10. Menu                  | 11. Forward   |
| 12. Backward         | 13. Confirming            | 14. Channel               | 15. Speaker   |
| 16. Battery cover    | 17. Memory Card Slot      |                           |               |

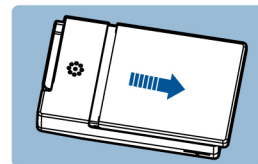
Remote controller



- 1. ON
- 2. OFF
- 3. Taking photo
- 4. NO

### 3.Fix battery

- Take down battery cover
- Fix the battery according to the sketch map



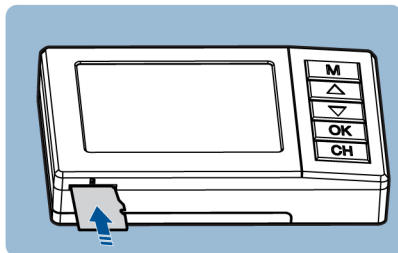
Please take out the battery if you don't use it for long time.

## INTRODUCTION GUIDE

### 4. Insert&take out MicroSD card.

#### ■ Insert MicroSD card

Insert the MicroSD card into the card slot according to the arrowhead and make the side with gold touch dot adown, then jog the MicroSD card until it emits the click.

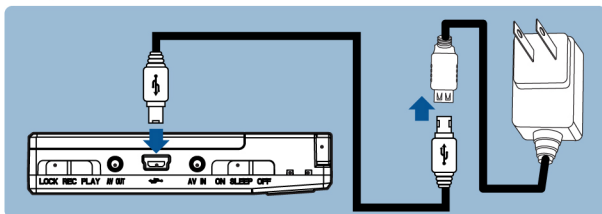


#### ■ Take out MicroSD card

Please not take out MicroSD card when it is reading and writing.

- Please insert or take out MicroSD card when the product is off, (if you insert or take out MicroSD card when the product is on, the product will be off automatically to make sure the data is safe; please restart the product to use again) .
- Please lightly press MicroSD inside until the click appears, then take out the MicroSD card

### 5. Charge battery



## INTRODUCTION GUIDE

### 6. Turn on/off the product

- When the power switch is on the OFF place, the product will turn off completely and it doesn't consume the battery capacity; dial the switch to the SLEEP place, the product is in the standby condition, you can remote control the product at this moment; Dial the switch to the ON place, the product turns on.
- Turn on/off the product manually  
Dial the power switch to OFF or SLEEP place, then to ON place to turn on the product; Contrarily, it turns off.
- Turn off/on by remote controller  
Dial the power switch to SLEEP place, Press ON button of the remote controller to turn on the product; Press OFF button of the remote controller to turn off the product

#### NOTICE:

If the power switch on the SLEEP and ON places, the remote controller can operate the product well. For example: the power switch on the ON place, the product turns on, then press the OFF button of the remote controller, the product turns off; Because at the moment, the power switch is on the ON place, but the product is off, if you want to turn on the product again, please press the ON button of the remote controller or dial the power switch to SLEEP place, then dial to ON place.

- When you use the product first, please fix battery well, then dial the power switch to SLEEP place, and keep 24 hours, in this way, it can recharge the built-in clock battery fully.
- When you use the product first, please set clock to make sure the recorded video with the correct time.
- Press "MENU" into the menu, Press "CH" to "Setup" menu, Press "▲/▼" to "Date Input", Press "OK" into setup, Under this menu:  
"CH": Select item  
"▲/▼": Adjust the value of the current item  
"OK": Confirm and exit



## OPERATION GUIDE

### 1. Function set menu

- Shortly press "MENU" into main menu (If long press "MENU" into playback mode)
- Press "CH" to switch between "Video Set" and "Setup".

#### VIDEO SET

Size:

- Set recording video size
- Optional content: VGA(640×480)、QVGA(320×240)

Tuning:

- Adjust the brightness, contrast and color specification of the video signal to satisfy the recording effect.
- Press "▲/▼" to select item, the "◀▶" icon shows the selected item, Press "OK" into setup and the selected item is max bright, then press "▲/▼" to adjust the value, the LCD screen shows the adjusted effect, Press "OK" to confirm, and return item selection and press "MENU" to exit setup.

Loop Record:

- When you turn on this setup to record, after the microSD card is full, it will delete the earliest recorder video files automatically, then go on recording until the recording switch dialed to PLAY, turn off the product or the battery runs up.
- Please use big capacity of microSD card (better 2GB or more)
- When you turn on this setup and restart recording, the application will calculate the recording time, if the time is less than 40minutes, it will delete the earliest recorded video files automatically until it has 40minute recording time, then it starts to record.
- When you record continuously, the file will be automatically divided into one max file with 30minutes, so when the application calculate the time, it will delete two files at least, when it is deleting the files, the recording time will stop, please wait, later it will start to record automatically.
- Please use this function carefully, because the covered files are beyond recall, please back up the useful files to other memory facility.

Time Stamp:

- Time Stamp function can record time into video, you can select: Selected Date、Date and Time.

Motion Detect:

- Motion Detect function can test motion condition of the objects and record it.
- Turn on setup, and make it into "SET", then dial "Recording Switch" to "REC", motion detect turns on, and the intension direction of the active menu will appear.
- When it detects the motion objects and the intension direction is with full force for about 5seconds, it starts up recording; when the intension direction is continuous, it goes on recording; when it doesn't detect the motion objects, the intension direction is without indication for about 5seconds, it stops recording.

#### SETUP

Format:

- Carry out the format operation will delete all of the files in the current memory facility, please back up the useful files to other memory facility before formatting.
- Formatting operation can only format the current memory facility.
- you can see it is memory card and built-in memory from the preview and playback mode screen of the vide.

Vibra:

- Vibra hint, this setup defaults "ON", when: ON/OFF、Taking photo、Recording、Memory card is full. Low voltage, it will output corresponding vibra: if you turn off this setup, there is no vibra hint at any condition.
- Please check the description of Vibra and indicatory light in detail.

## OPERATION GUIDE

Language:

- Please choose proper language in the menu

Auto Off:

- it can set up the time of turning off automatically: 3minutes、10minutes、30minutes

Sys.Reset:

- This setup can renew the menu to factory-set.

TV output:

- Please select proper video output format according to the used places of this product: NTSC、PAL

Date Input

- Enter "setup" to press "CH" to select items, Press "▲/▼" to set up the value, Press "OK" to confirm "setup" and escape.
- Please set clock before you use it for the first time to make the recorded video to be saved with the correct time.

USB

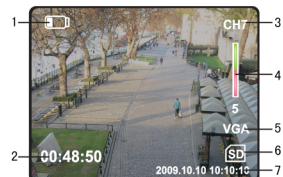
- This product can use standards USB data cable to connect PC, here you can set the product with disk drive and PC camera mode to connect PC.

### 2. Volume Adjustment

- when you start the system, it is with the least volume.
- Long press "▲" to increase the volume, long press "▼" to reduce the volume, and the screen shows the volume value icon.

### 3. Wireless receiving mode

- when you don't insert AV IN camera, the product is with wireless receiving mode, when you insert AV IN camera, the product switches into AV IN mode.
- Working screen menu



1. Battery remaining
2. Recordable time
3. Receiving Channel
4. Volume Icon
5. Video Size
6. Memorizer Icon
7. Time Stamp

- Battery remaining electricity capacity icon: Shows the left capacity of the current battery
- Receiving channel: shows the channel of current wireless receiving mode, for example: CH1、CH2、...CH8
- Volume icon: when you long press "▲/▼", the volume icon will display
- Recordable time: shows the left time of current memorizer, this time is related with the channel size of Video Set, if it is set up to QVGA, the recording time will be the longest; the icon will display the left recording time in red during recording.
- Video size: shows current video size, "VGA" or "QVGA".
- Memorizer icon: shows current memorizer, "M" for built-in memory, "SD" for memory card
- Time Stamp: this icon will appear after you start the menu; you can select: Selected Date、Date and Time, when you are recording, the time will shows on the video.

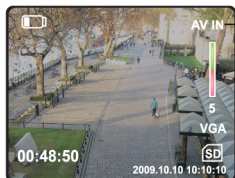
## OPERATION GUIDE

Use wireless receiving function to receive video and audio

- Tune the antenna toward upside of the product to make the receiving signal more stable.
- Press "CH" to adjust channel, and keep the distance with the transmitter (please refer to the manual of the transmitter)
- If the product receives other interrupted signal, please adjust the product and the transmitter into other channel to avoid the interference.

### 4. AV IN Mode

- Connect camera into AV IN jack to switch into AV IN mode
- Screen menu



—AV In Mode

- AV IN: for current working AV IN mode
- Other screen icons, please refer to the screen icons of the wireless receiving mode under camera
- Please use the commendatory camera to work with the product
- Please not use the product which can't match our product, otherwise, it will damage our product and the camera.

Use other AV signal by the AV cable

- Insert one end of the AV cable into the AV IN jack of the product, the other yellow RCA jack connects the video signal jack.

### 5. Recording video

Recording operation

- Set the recording switch from PLAY to REC when you preview the video, start up recording, the screen shows recorded time in red, for example: "00:10:02", it means the recorded time is 10 minutes and 2 seconds, if you want to exit, set the recording switch from REC to PLAY.
- In recording condition, switch REC to LOCK, the LCD screen will close and lock the following buttons: MENU、▲、▼、OK、CH.

Recording related function

- During recording, if the continuous recording is more than 30 minutes, the system will create a new file to go on recording to make sure the video data can play back normally.
- You can mark time on the recording video, but please start the function, and refer to (function setup menu)
- AV IN mode recording: When the lost video signal is more than 10 seconds, it will exit automatically and output blink video vibra hint, when it detects video signal again, the product can start recording automatically.

## OPERATION GUIDE

### 6. Remote controlling operation

Turn on and record by remote controller

- Before you turn on the product, please confirm you will use wireless receiving mode of AV IN mode, mode switch operation please refer to (wireless receiving mode or AV IN mode)
- Dial the power switch to SLEEP, recording switch to REC or LOCK, then press ON button of the remote controller into recording condition.
- Notice: If the recording switch on LOCK, the LCD screen will be off after you turn on the product, then into recording condition.

Take photos by remote controller

- Press "taking photo" button of the remote controller once to take one photo
- Under recording condition, press "taking photo" button of the remote controller once, it will exit recording first, then take one photo, and create a new recording file to go on recording.

Turn off by remote controller

- Press OFF button of remote controller to turn off the product, if it is during recording condition, it will exit recording, then it turns off automatically.

### 7. Video playback

Playback

- Long press "MENU" into video playback mode
- Button function under playback mode

MENU button: setup menu

- ▲ : under the preview condition, long press it to increase the volume, short press to set the speed times
- ▼ : under the preview condition, long press it to reduce the volume, short press to set the fast backward times

OK: Play/Pause

CH: Stop

- The higher part of Playback screen shows played back time/total time, for example: 00:05:08 / 00:10:02

Playback setup menu

- Press "CH" to switch playback setup and Setup Delete
- Press "MENU", select "delete" into setup to select signal file、all、selected files.
- If the file set up the protection, it can't be deleted.

Copy To Card

- If you insert the memory card, you can copy all of the files of the built-in memory into the memory card.
- You can only copy the files of the built-in memory into the memory card, when you copy one time, it will build a new file in the memory card to save all of the files from the built-in memory, for example: 101DSCIM, when you copy one more time, it will build a new file 102DSCIM

Slide Show

- When you use the slide show function, you can browse photos and the first frame of the video files, you can set up the watching time: 3seconds、5seconds、10seconds
- Press "OK" can return preview condition

## OPERATION GUIDE

### Protect

- You can set up the video file into protection condition, it can avoid the file delete accidentally
- You can select to protect the current file, all and selected files, when it enters selected files, the file will show in brevity figure displays, you can select the file, press "OK" to protect or cancel protection, use "▲/▼" to browse the file, press "MENU" to exit selection.

### Notice:

Format operation will delete all of the files in the current memorizer and not limited by such setup.

### Thumbnail

- before Playback file, you can enter brevity menu, in this way, you can select the demanded files to playback, the screen can shows 9 file brevity figures Press "MENU" to exit brevity menu
- the lower part of the screen shows file name, for example:100-0001, 100for the file is in the 100DSCIM directory of the memorizer, 0001 for serial number of the file name, the complete name of the file is: PICT0001

### 8. Vibra&indicator light

#### Vibra

- Power on:continuous vibra for 2seconds
- Power off: 3 time Vibra
- Power off in low voltage:2 time Vibra
- recording restart: 3 time fast vibra
- Memorizer is full: 5 time fast vibra
- AV In without video: continuous fast vibra

#### Station indicatory light

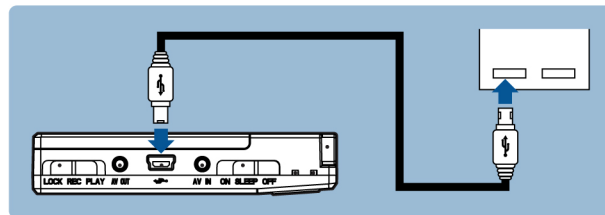
- normal work, station indicatory light shines for long time
- when recording, station indicatory light shines continuously every one second
- After the memorizer is full during recording, the station indicatory light shines continuously every half second
- when you connect the product with PC, the station indicatory light shines fastly

#### Charging indicatory light

- When you insert the recharger, if the battery needs recharge, it will recharge automatically, the recharging indicator light will shines in red, after the battery is full of recharging, the recharging indicatory light will shines in green.

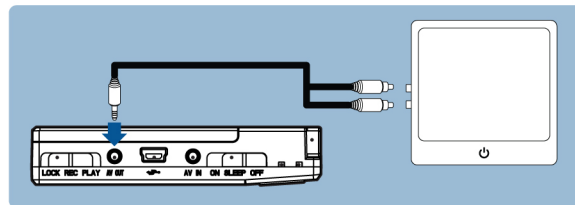
## OTHER FUNCTIONS

### 1. Connect PC



- Before connecting PC, you can set the product with disk drive and PC camera mode to connect PC.
- The production support standard USB2.0 and you can use the standard USB data cable to connect the product to PC.
- When you use USB data cable to connect the product to PC,PC will recharge the product automatically, unless you take out the battery or the battery is full of electricity capacity. And the system power is also offered by the USB interface..
- When you take out the USB cable under the USB mode, the product will turn off automatically.

### 2. Connect TV (AV OUT)



- Please set NTSC or PAL in the setup menu according to the local TV system
- Insert AV cable into the product, the other yellow end RCA(video)pin insert video input pin of TV, white RCA(audio) pin into TV audio pin.

## SOLUTION FOR COMMON PROBLEMS

### 1. Can't remotely control

- Please check if the battery is fixed correctly and make sure the battery is full enough for use.
- Please check the power switch is on "SLEEP" or "ON"
- If the distance between the product and the remote controller or there is big metal objects, you can't remotely control

### 2. There is no picture on the DVR

#### Wireless receiving mode

- Please check the transmitter to work normally, and the channel of the receiver and transmitter is the same or not
- If the distance between the product and the remote controller or there is big metal objects

#### AV IN Mode

- Please check if the camera connects correctly with AV IN jack
- Please check if the camera jack inserts completely into AV IN jack

### 3. Can't record

- Please check "recording switch" is on "REC" or "LOCK", "recording switch" must be on "REC" or "LOCK"
- If it hints that memorizer is full, please delete some files to record again
- under AV IN mode, if there is no video signal, it can't record
- If you dial recording switch to "REC" and it can't restart recording, and comes out schedule menu, please check

"Motion Detect" setup is on or not, then restart recording

### 4. The LCD screen can't display anything

- check if the "recording switch" is on "LOCK", please dial the switch "REC" or "PLAY" to open LCD screen

### 5. The wireless receiving picture is in poor quality or near distance

- Please check the receiving frequency is the same with the transmitter or not, and if the antenna fixes correctly or not
- If there is the wireless equipment with the same frequency around, please select other frequency to avoid the interference or avoid they are used in the same place.
- If the distance between the product and the remote controller or there is big metal objects, and try to avoid them.

## SPECIFICATION

SYSTEM	Video size: VGA(640×480), QVGA(320×240) Motion detection: MPEG-4, single audio Memorizer: built-in memory (about 59MB), MicroSD(TF) Card, support Max 16GB Wireless receiving: 8channel
LCD	2.4"480×234dot
INPUT AND OUTPUT INTERFACE	AV output: Single audio channel, video output AV input: Single audio channel, video input, battery voltage output USB interface: USB2.0
POWER ADAPTER AND OTHERS	BATTERY: Rechargeable LI battery 3.7V Power adapter Input: AC 100V-240V 50/60Hz Output: DC 5V/1A Power consumption (recording): 1.2W Speaker: single audio Working temperature: 0~40℃ Storage temperature: -20℃ ~ -60℃ Size: 85×54×17(mm)